



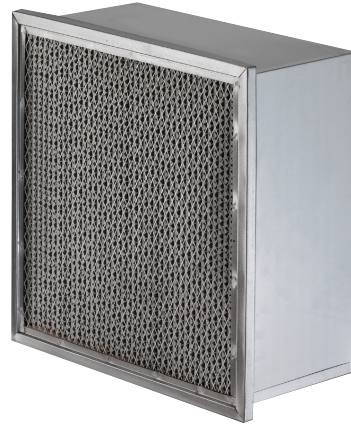
# DuraCel

## Product Overview

- Well suited in industrial applications
- Heavy duty construction
- High dust holding capacity
- Long filter life
- Low pressure drop

## Specification

EN779	M6 - F8
ASHRAE 52.2	MERV 11 - 14
Filter Depth (mm)	292
Media Type	Fibreglass
Frame Material	Galvanised Steel
Gasket	Optional
Recommended Final Resistance	450 Pa
Max Operating Temperature	-32°C to +70°C
Humidity Range	0 to 100% Relative Humidity



## Product Information

Model	Nominal Size Inches (W x H x D)	Actual Size mm (W x H x D)	Rated Airflow (CMH)	Rated Initial Resistance (Pa)
<b>M6 / MERV 11</b>				
DuraCel XL60	24 x 24 x 12	592 x 592 x 292	3,400	125
DuraCel XL60N				140
<b>F7 / MERV 13</b>				
DuraCel XL90	24 x 24 x 12	592 x 592 x 292	3,400	170
<b>F8 / MERV 14</b>				
DuraCel XL90N	24 x 24 x 12	592 x 592 x 292	3,400	160