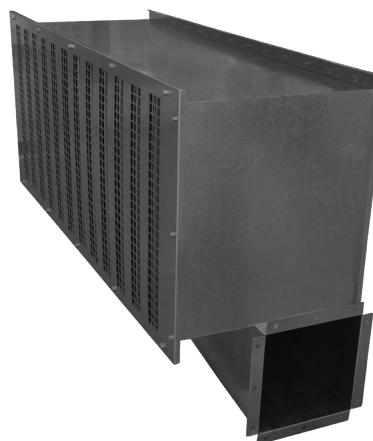




S-Trap HD

Product Overview

- Industry leading capacity
- High filtration performance at lower pressure drop
- Heavy duty welded and painted construction
- Self-cleaning
- Painted mild steel or stainless steel options
- Quick & easy removable inlet screen and filtration elements



Specification

Number of Filter Element	1-40
Arrestance	92%
Housing Material (Standard)	Steel with Polyurethane Coated
Housing Material (Optional)	Stainless Steel
Dust Chute	Centre, Left, Right, Both sides
Special Size Available	Yes
Other Optionals	Secondary Fan, Control Panel, Manometer, Weather Hood, Support Legs

Product Information

Part Number	Actual Size mm (H x W x D)	Number of Filter Element	Airflow @ 50 Pa		Airflow @ 250 Pa	
			Clean (CMH)	Secondary (CMH)	Clean (CMH)	Secondary (CMH)
STHD 2						
STHD-2-4	610 x 651 x 605	4	3,683	405	7,367	810
STHD-2-6	610 x 895 x 605	6	5,525	608	11,050	1,216
STHD-2-8	610 x 1139 x 605	8	7,367	810	14,733	1,621
STHD-2-10	610 x 1383 x 605	10	9,208	1,013	18,417	2,026
STHD-2-12	610 x 1627 x 605	12	11,050	1,216	22,100	2,431
STHD-2-14	610 x 1871 x 605	14	12,892	1,418	25,783	2,836
STHD-2-16	610 x 2115 x 605	16	14,733	1,621	29,467	3,241
STHD-2-18	610 x 2359 x 605	18	16,575	1,823	33,150	3,647
STHD-2-20	610 x 2603 x 605	20	18,417	2,026	36,833	4,052
STHD 4						
STHD-4-6	1290 x 895 x 605	6	11,050	1,216	22,100	2,431
STHD-4-8	1290 x 1139 x 605	8	14,733	1,621	29,467	3,241
STHD-4-10	1290 x 1383 x 605	10	18,417	2,026	36,833	4,052
STHD-4-12	1290 x 1627 x 605	12	22,100	2,431	44,200	4,862
STHD-4-14	1290 x 1871 x 605	14	25,783	2,836	51,567	5,672
STHD-4-16	1290 x 2115 x 605	16	29,467	3,241	58,933	6,483
STHD-4-18	1290 x 2359 x 605	18	33,150	3,647	66,300	7,293
STHD-4-20	1290 x 2603 x 605	20	36,833	4,052	73,667	8,103

*Housing height excludes dust chute.