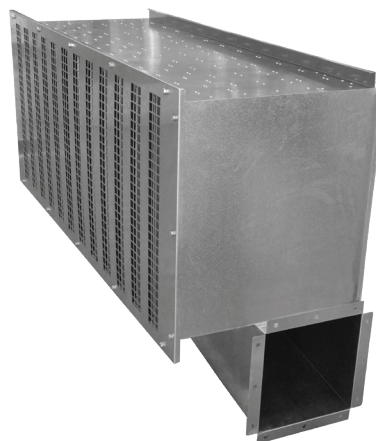




## S-Trap L

### Product Overview

- Industry leading capacity
- High filtration performance at lower pressure drop
- Compact, lightweight
- Self-cleaning
- Hot-dip galvanised steel & riveted
- On-site assembly possible
- Quick & easy removable inlet screen and filtration elements



### Specification

Number of Filter Element	1-40
Arrestance	92%
Housing Material (Standard)	Galvanised Steel
Housing Material (Optional)	Stainless Steel
Dust Chute	Centre, Left, Right, Both sides
Special Size Available	Yes
Other Optionals	Secondary Fan, Control Panel, Manometer, Weather Hood, Support Legs

### Product Information

Part Number	Actual Size mm (H x W x D)	Number of Filter Element	Airflow @ 50 Pa		Airflow @ 250 Pa	
			Clean (CMH)	Secondary (CMH)	Clean (CMH)	Secondary (CMH)
<b>STL 2</b>						
STL-2-4	610 x 651 x 605	4	3,683	405	7,367	810
STL-2-6	610 x 895 x 605	6	5,525	608	11,050	1,216
STL-2-8	610 x 1139 x 605	8	7,367	810	14,733	1,621
STL-2-10	610 x 1383 x 605	10	9,208	1,013	18,417	2,026
STL-2-12	610 x 1627 x 605	12	11,050	1,216	22,100	2,431
STL-2-14	610 x 1871 x 605	14	12,892	1,418	25,783	2,836
STL-2-16	610 x 2115 x 605	16	14,733	1,621	29,467	3,241
STL-2-18	610 x 2359 x 605	18	16,575	1,823	33,150	3,647
STL-2-20	610 x 2603 x 605	20	18,417	2,026	36,833	4,052
<b>STL 4</b>						
STL-4-6	1290 x 895 x 605	6	11,050	1,216	22,100	2,431
STL-4-8	1290 x 1139 x 605	8	14,733	1,621	29,467	3,241
STL-4-10	1290 x 1383 x 605	10	18,417	2,026	36,833	4,052
STL-4-12	1290 x 1627 x 605	12	22,100	2,431	44,200	4,862
STL-4-14	1290 x 1871 x 605	14	25,783	2,836	51,567	5,672
STL-4-16	1290 x 2115 x 605	16	29,467	3,241	58,933	6,483
STL-4-18	1290 x 2359 x 605	18	33,150	3,647	66,300	7,293
STL-4-20	1290 x 2603 x 605	20	36,833	4,052	73,667	8,103

\*Housing height excludes dust chute.